

# MODULINE PIPE SUPPORTS

WorldWide Machining & Welding, Inc. has developed a variety of support styles for your different project needs.

**FIELD APPLICATION**

Pipe supports allow for easier installation, inspection and maintenance.

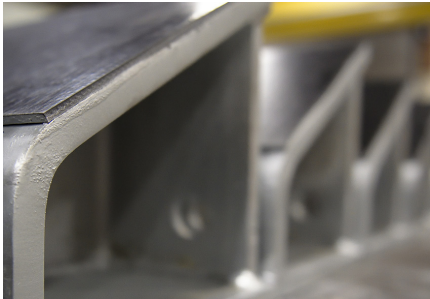
**FEATURES/SPECIFICATIONS**

- Adjustable supports
- Elbow supports
- Riser block guide supports
- Riser block clamp supports
- Custom supports

Different liners are available upon request.

**PROCUREMENT**

Prices and lead time quotes are available upon request.



SYSTEM RANGE	
Range	2"-54" pipe
The pipe support system ranges in sizes from 2" pipe-54" pipe. Custom sizes are available upon request.	
<i>Please reference the order drawings for additional specifications.</i>	

